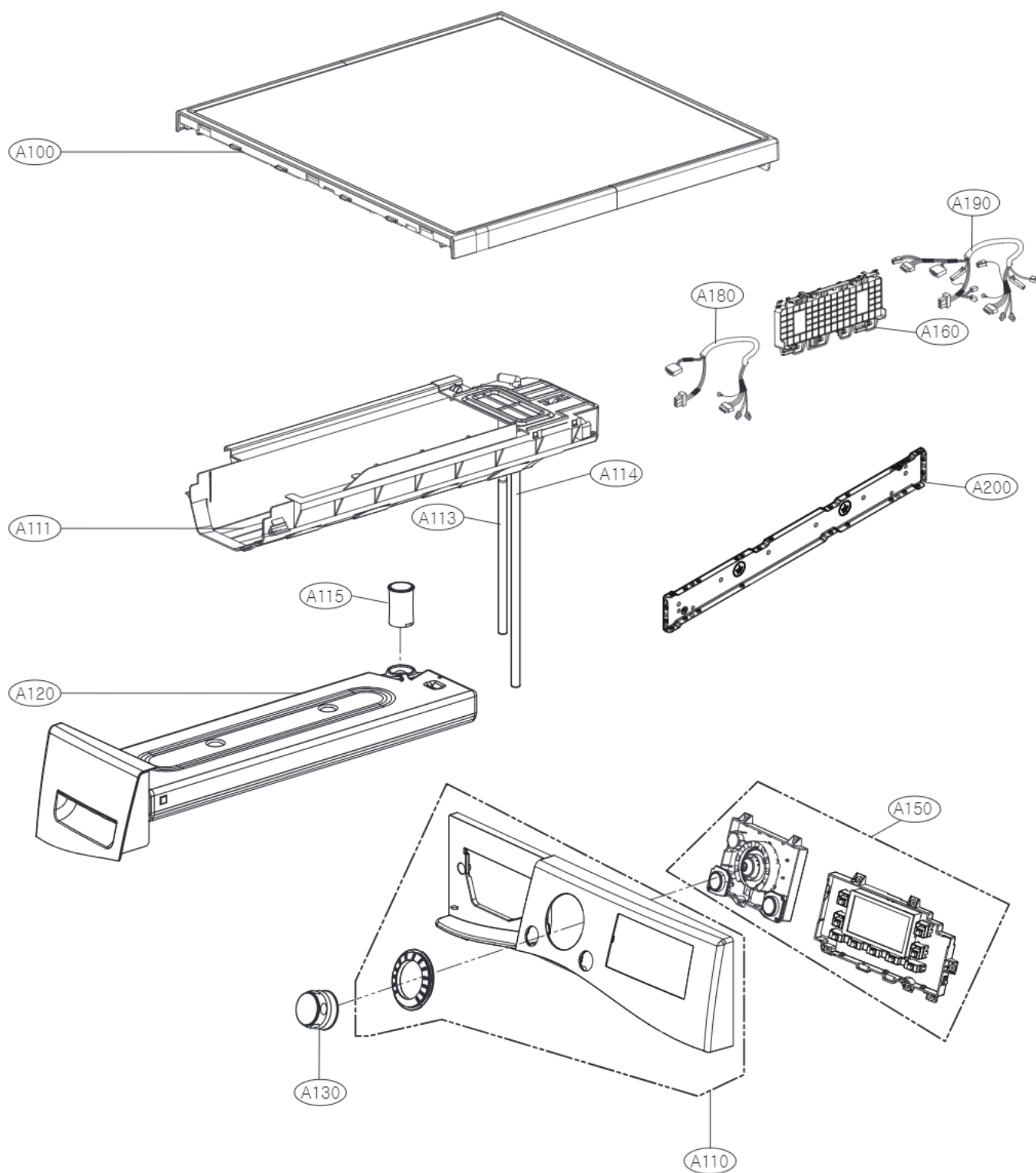
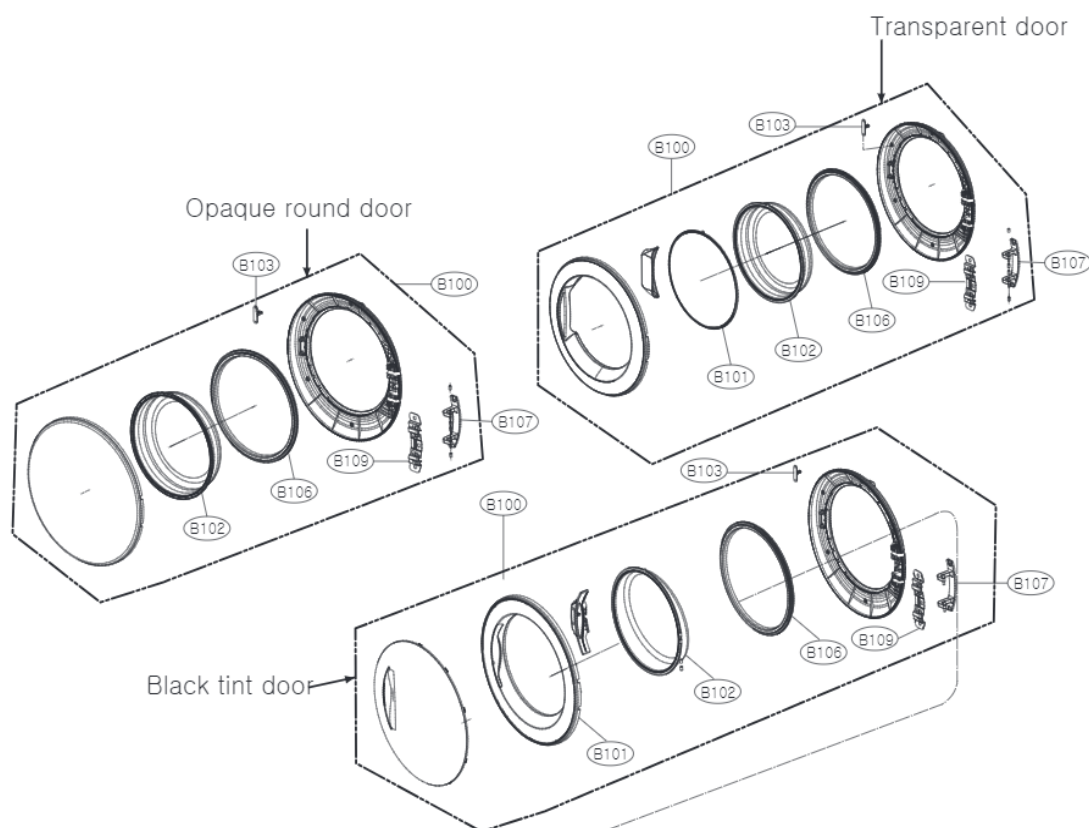


● Control Panel & Top plate Assembly



● Cabinet Cover & Door Assembly

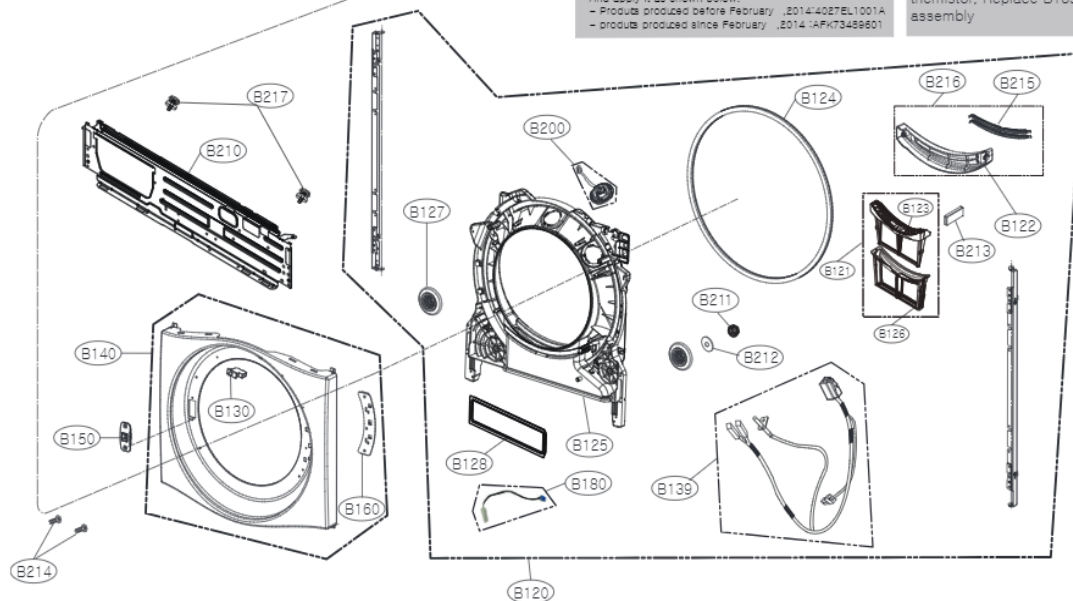


Note

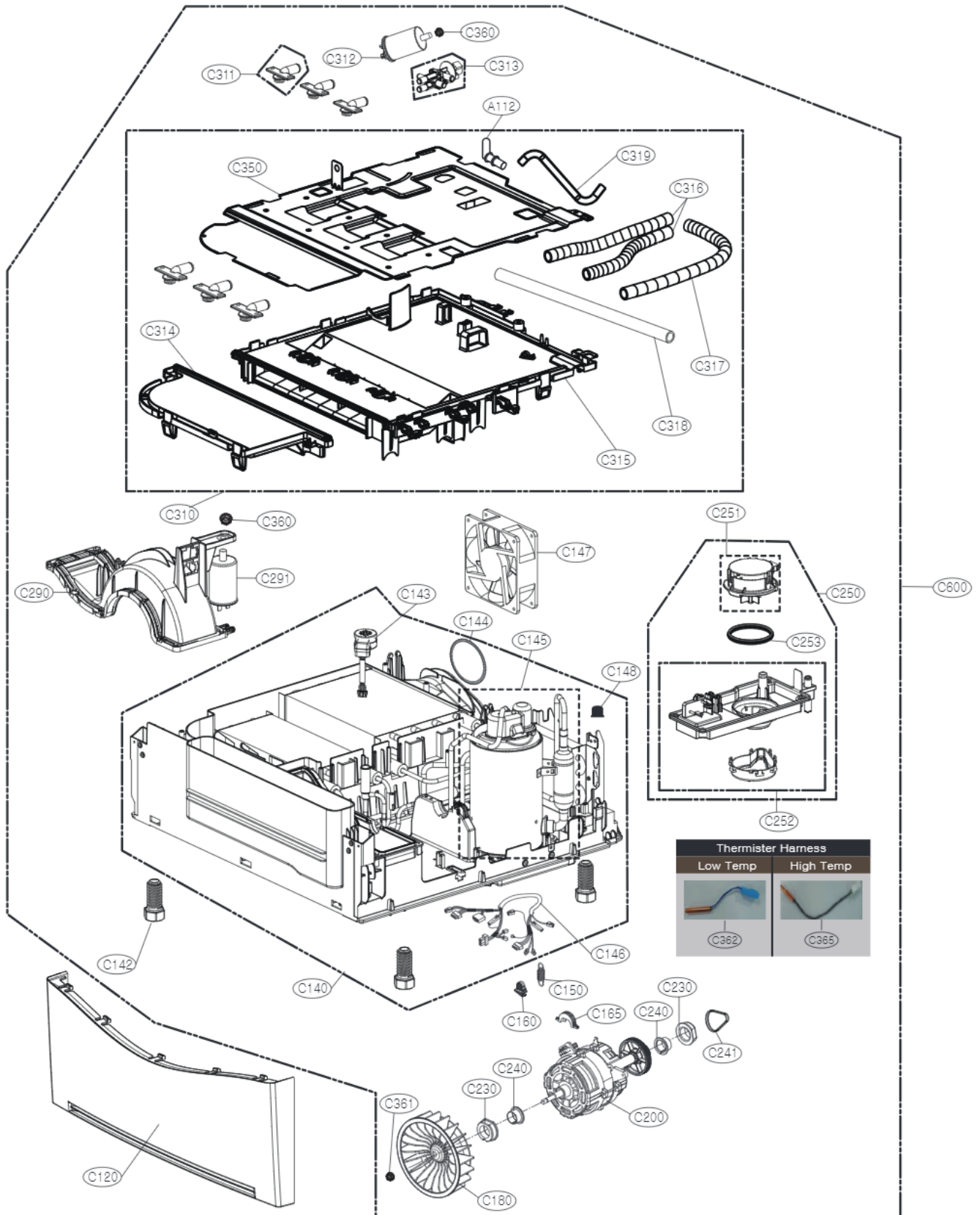
If you want to replace the B180 part (Locker Assembly),
Check out the product manufacture date on the rating label.
And apply it as shown below.
- Product produced before February ,2014: 4027EL1001A
- Product produced since February ,2014 : APK7349601

Note

If you want to exchange
thermistor, Replace B139
assembly



● Base & Motor Assembly



● Back Cover & Drum Assembly

