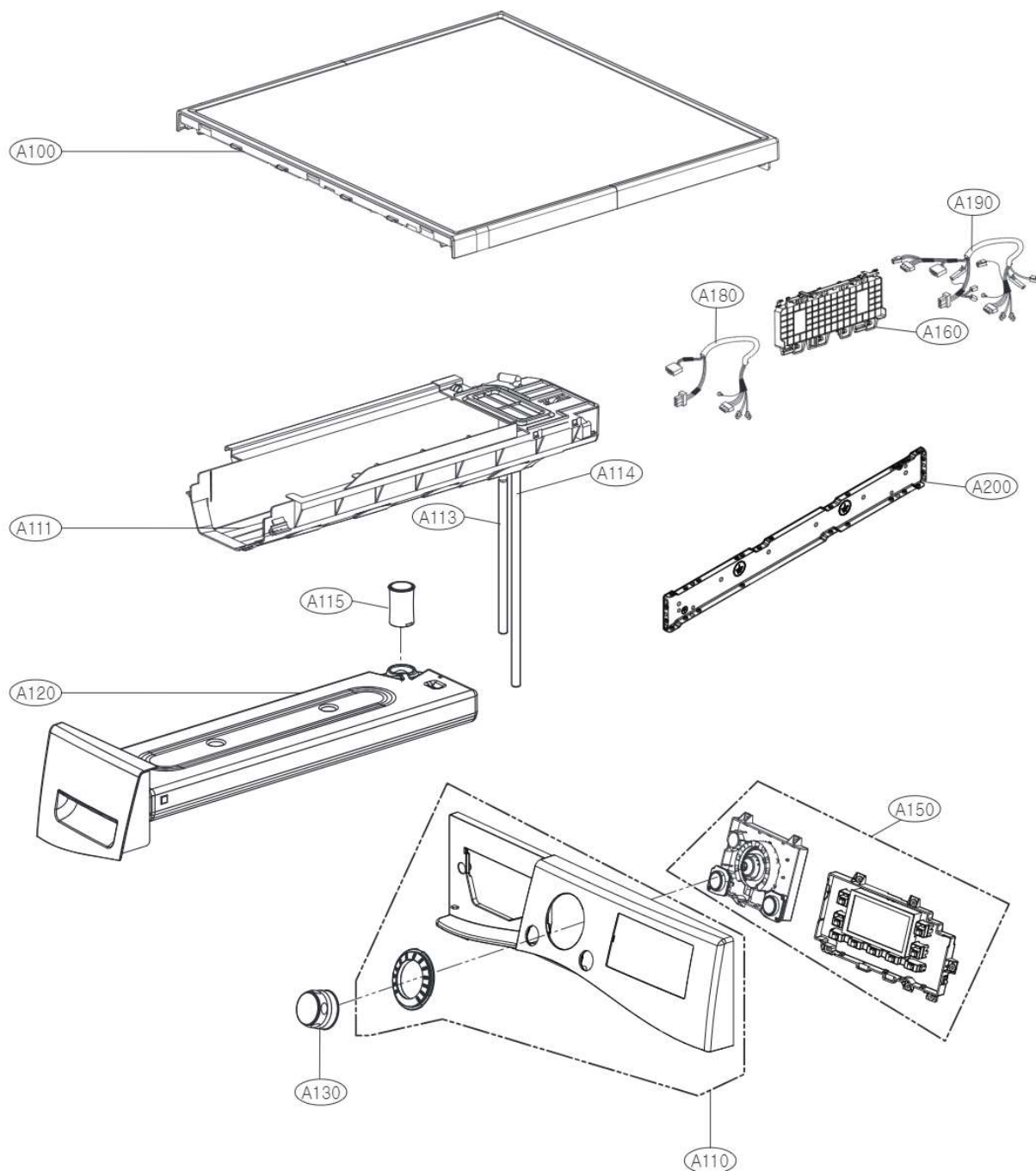
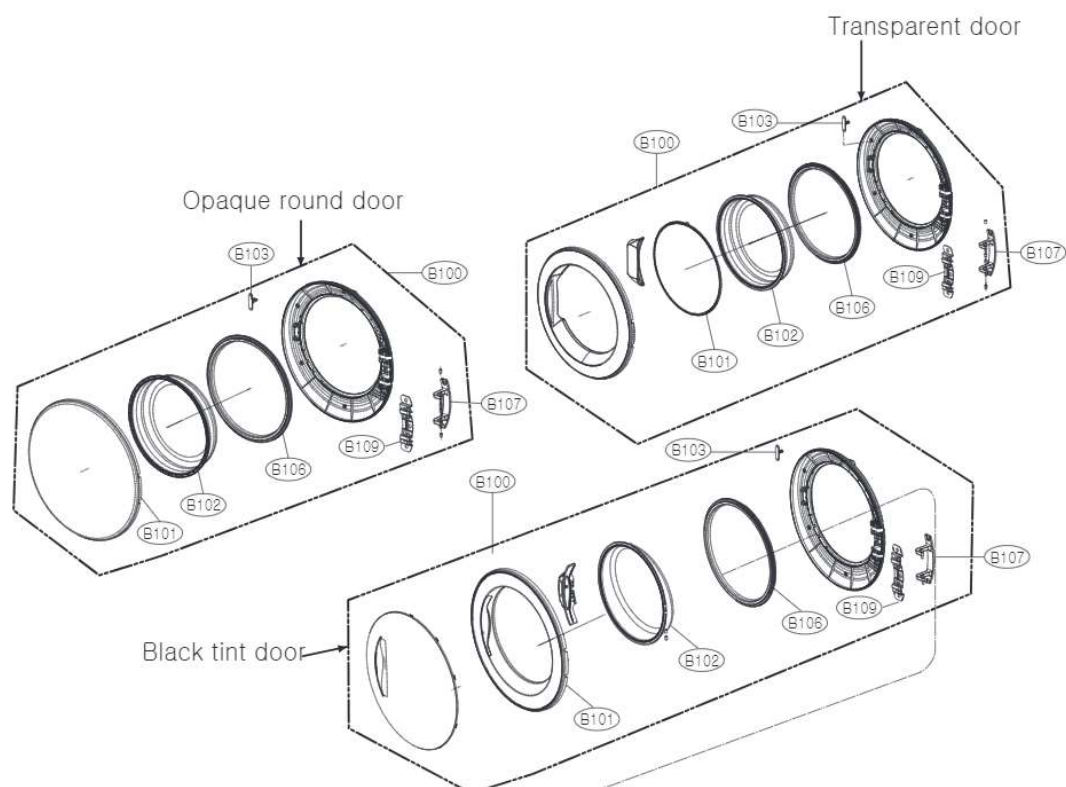


● Control Panel & Top plate Assembly



● Cabinet Cover & Door Assembly

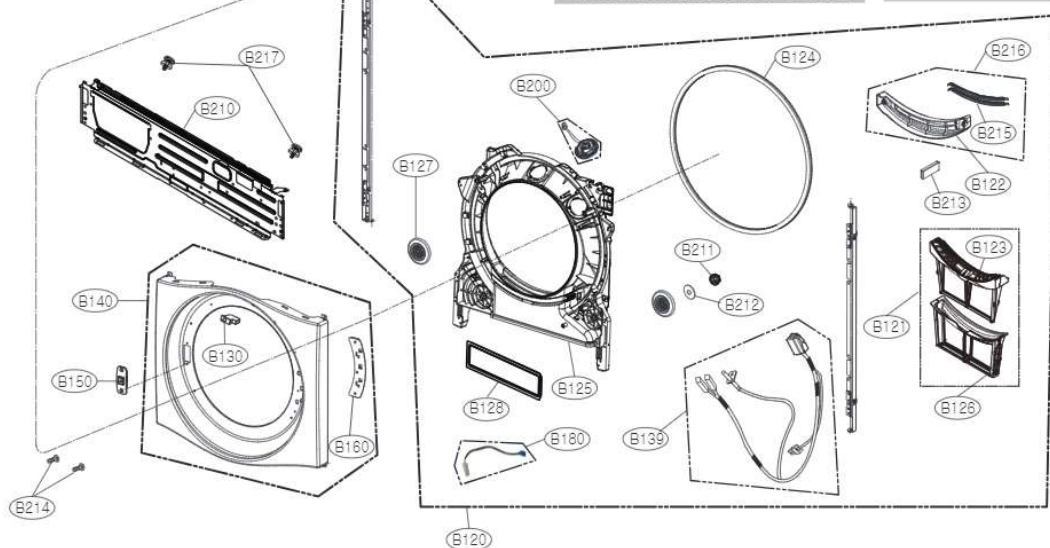


**Note**

If you want to replace the B150 part (Locker Assembly),  
Check out the product manufacture date on the rating label.  
And apply it as shown below.  
- Products produced before February 2014: 4027EL1001A  
- Products produced since February 2014: 4PK73489601

**Note**

If you want to exchange  
thermistor, Replace B139  
assembly



## ● Base &amp; Motor Assembly

